

Wireless/Wired Network IP Camera

Night Vision & Remote Operation

User Manual

Thank you for buying our IP camera

AJ Series IP Camera products are designed and equipped for local and remote network video surveillance system, including wired IP bullet camera, wireless IP bullet camera, IP IR dome camera, IP IR waterproof camera, IP Pan/Tilt/Zoom Camera etc. We adopt high performance chip to ensure high quality media processor which processes audio and video collection, compression and transmission. Standard M-JPEG compression format ensures clear and streaming video performance. It enables users to view live video via IE6.0, IE7.0, IE8.0, Firefox, Google browser or other standard browser.

AJ series IP Camera products are applicable for big, medium-sized and small enterprises, chain store, factory, home and all kinds of spots where remote network video transmission and control supposed to be installed, they are easy to be installed and operated. Before the installation of the IP camera, please check if your product accessories in the package are complete

Packing List

Untie the pack and check the items contained against the following list:

- IP Camera X1**
- Wi-Fi Antenna X1 (only available for wireless model)**
- Warranty Card X1**
- DC Power Supply X1**
- CD X1**
- Certificate of Quality X1**
- Mounting bracket X1**

NOTE: Please contact us immediately if anything damaged or short of contents.

Table of CONTENTS

| | |
|---|----|
| 1. Product Introduction | 3 |
| 1.1. Safety Introduction | 3 |
| 1.2. Product Specifications..... | 4 |
| 1.3. System Requirements..... | 5 |
| 1.4. Product Views..... | 5 |
| 1.4.1 Front View..... | 5 |
| 1.4.2 Interface View..... | 5 |
| 1.5. Hardware Installation..... | 6 |
| 1.6. Software Installation..... | 6 |
| 2. Software Operation..... | 6 |
| 2.1. Search Tool Software..... | 7 |
| 2.1.1. Search The IP address of the Camera..... | 7 |
| 2.1.2. Configuration of the Network..... | 7 |
| 3. Real-Time Video Demonstration..... | 9 |
| 3.1. Camera Login..... | 9 |
| 3.2. View via IE Browser..... | 10 |
| 3.3. View via Safari, Firefox, Google Browser. | 13 |
| 3.4. Main Menu interface Introduction..... | 14 |
| 3.5. Administer Setting Instruction..... | 15 |
| 3.5.1. Multi-Device Settings..... | 16 |
| 3.5.2. Basic Network Settings..... | 17 |
| 3.5.3. Wireless Settings..... | 18 |
| 3.5.4. ADSL Settings..... | 19 |
| 3.5.5. Dynamic DNS Settings..... | 19 |
| 3.5.5.1. DDNS Setting | 22 |
| 3.5.5.2. Port Forwarding Settings..... | 23 |
| 3.5.5.3. DDNS Register..... | 25 |
| 3.5.6. Email and FTP Service Settings..... | 29 |
| 3.5.7. Alarm Service Settings..... | 29 |
| 3.5.8. Reset/Firmware Upgrade Settings..... | 30 |
| 3.5.9. Restore Factory Settings..... | 31 |
| 3.5.10 Reboot Equipment..... | 31 |
| 4. Warranty..... | 32 |

1. Product Introduction

1.1 Safety Instructions

(1). Use the proper power source.

Do not use this product with a power source that supplies more than the specified Voltage (100-240V AC).

(2). Never insert anything metallic into the camera.

Inserting metal object into the camera can be a source of dangerous electric shock.

(3). Do not operate in wet or dusty environment.

Avoid places like a damp basement or dusty hallway.

(4). Do not attempt to disassemble the camera.

You may be subjected to severe electrical shock if you attempt to take apart the camera while the camera is connected to its power source. If there are any unusual sounds or smells coming from the camera, unplug it immediately and contact Customer Service.

(5). Handle the camera carefully

Dropping the camera on any hard surface may cause a malfunction. If the camera does not work properly due to physical damage, please contact Customer Service for repair or exchange.

(6). Apply to FCC and CE Rule

This device complies with part 15 of the FCC and CE Rules. Operation is subject to the following two conditions:

1: This device may not cause harmful interference.

2: This device must accept any interference received, including interference that may cause undesired operation.

Any changes or modifications not expressly approved by the party responsible for compliance could void the user's authority to operate the equipment. This equipment complies with FCC and CE radiation exposure limits set forth for uncontrolled environment. This equipment should be installed and operated with minimum distance 20 cm between the radiator & your body.

This transmitter must not be co-located or operating in conjunction with any other antenna or transmitter.

1.2. Product Specifications

*- Adopt high Performance, strong function media processor 32Bit RSIC

*- High sensor CMOS

*-Adopt optimized MJPEG video compression algorithm, realize high-definition images transmission in narrow bandwidth;

*-Maximum support 15 users viewing at the same time, no limit for users if using forwarder Server function;

*- Built in Web Server, convenient for users to use standard browse to realize the real time monitoring and setting administration;

*-Support WIFI: 802. 11b/g wireless networking;

- *-Support remote system update;
- *-Support DDNS analysis, support LAN & Internet (ADSL,Cable Modem)
- *-Support variety of network protocol: TCP/IP, UDP, SMTP, PPPoE, Dynamic DNS, DNS Client, SNTP, BOOTP, DHCP, FTP, SNMP, WIFI/802. 11b/g
- *-Parts of modes products support one/ two way audio, talkback;
- *-Support motion detection alarm function (area & sensitivity Configurable);
- *-Support image snapshot
- *-Abnormal automatic recovery function, auto reconnection available when network Interruption occurred.
- *-Dynamic alarm function, alarm time-schedule configurable.

1.3. System Requirements

| | |
|--------------------|--|
| CPU: | 2.06GHZ or above |
| Memory: | 256M or above |
| Network Card: | 10M or above |
| Display Card: | 64M or above |
| Operating System: | Windows XP/Vista/Windows 7 (32 bit) |
| Hard Disk Drive: | No Maximum Storage Requirement |
| Internet Explorer: | Version 5.0 or above |
| DirectX: | Version 8.0 or above |
| Audio Card: | PC must have microphone and speaker connected and configured for 2-Way audio play. |
| Network Protocol: | TCP/IP, UDP, SMTP, PPPoE, Dynamic DNS, DNS Client, SNTP, BOOTP, FTP, SNMP, Wifi (802.11 b/g) |

1.4. Product Views

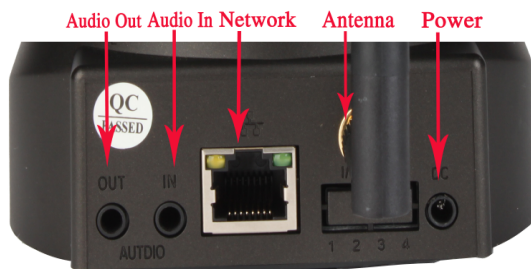
1.4.1 Front View



1. Built-in Antenna
2. Lens
3. Ring of LED Bulbs
4. Light Sensor
5. Microphone
6. Network Indicator Light
7. Speaker

Figure 1.1

1.4.2 Interface View



Interface of C198



Interface of Waterproof Series Cameras

Figure 1.2

- 1: Audio Out , 2: Audio In
- 3: Ethernet interface: RJ-45 interface. Power Supply Light: constant on after power up
- Network light: constant sparkle after power up data transmission.
- 4: Antenna:
- 5: Power input interface: connect direct current 5V Power

1.5 Hardware Installation

Follow the steps below to set up your camera hardware. Make sure to follow each step carefully to ensure that the camera operates properly

1. Install the Wi-Fi antenna (For wireless model) .
2. Plug the power adaptor into camera
3. Plug the network cable into camera, the other side to the router/switch
4. It takes approx 30 seconds to boot up the camera, then you will find the IP address from “Search Tool” (Figure: 1.8)
5. When the power on and network cable connected, the green led of the real panel will keep on, The yellow led will keep flash.

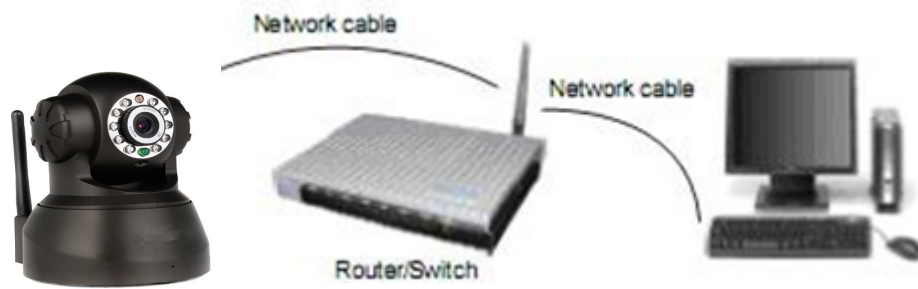


Figure 1.3

1.6 Software Installation



Figure 1.4

Open the CD Install the follow software:


1. ActiveX: Click "OCX setup"—"Next"—"Install"—"Finish".
2. Search Tool: Open the CD, click  Search Tool, The Search Tool will run automatically.(No need to install. You can copy this software to your desktop.)



Figure 1.5

2. Software operation

2.1 Search Tool Software

2.1.1 Search the IP address of the camera.

When the device has been mounted properly, you can double click the Icon

 "Search Tool" run this IP address search tool.

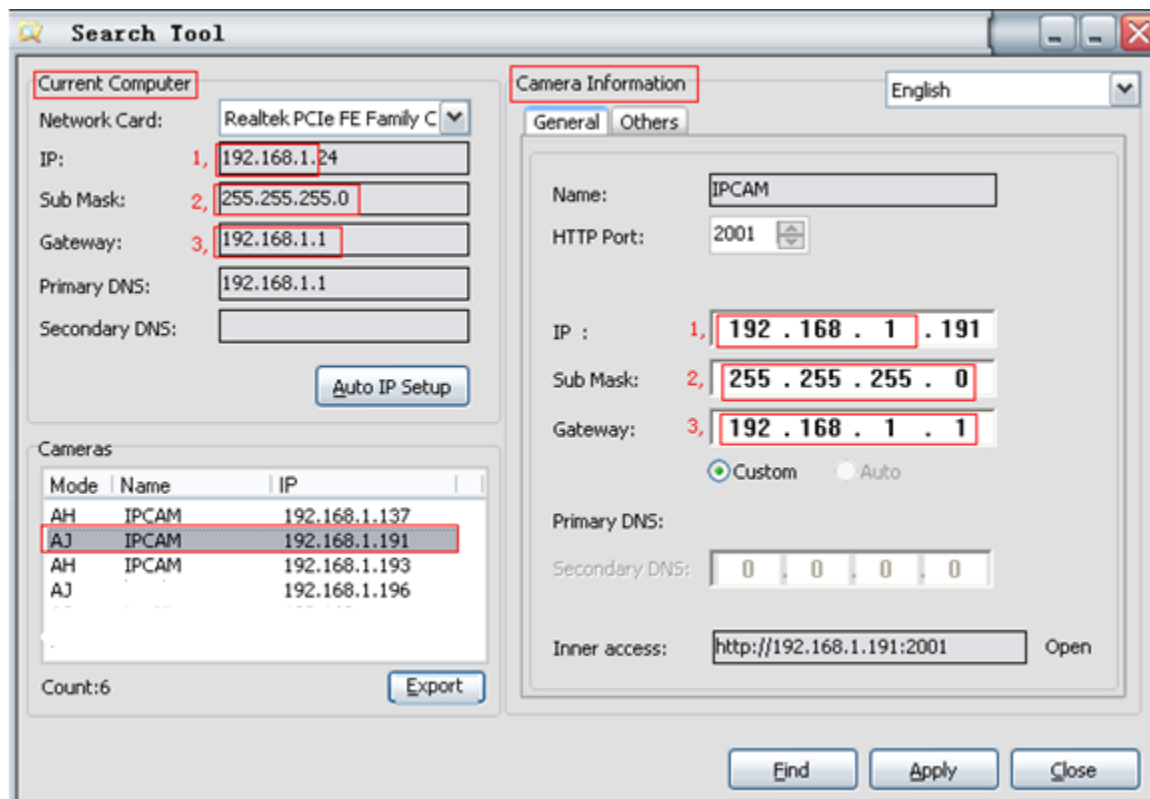
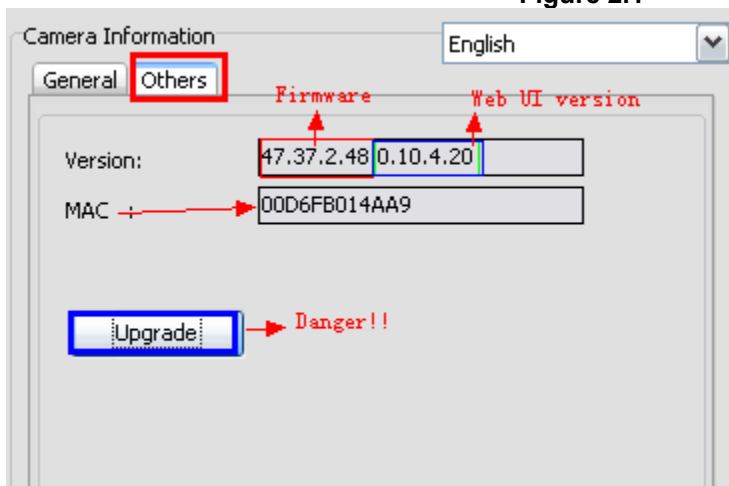


Figure 2.1



Note: The software searches IP Servers automatically over LAN.

There are 2 cases:

1. No IP Cameras found within LAN. After about 1 minute search, the Equipments List Field not show the IP address.
2. IP Cameras have been installed within LAN. All the IP Cameras will be listed and the total number is displayed in the Equipments list field as shown in Figure 2.1

Note:

1. **Current Computer** indicates the Computer's IP Address information.
2. **Equipment information** indicates the IP camera's IP Address information.
3. If you find that the camera's **"Subnet Mask", "Gateway", "DNS Server"** is not as same as your current computer's. You need try to change the camra's IP address. **Make sure the "Subnet Mask", "Gateway", "DNS Server" is the same as your router's or your current computer's.**
4. If you don't know how to configure your camera's IP address. You can click "Update" button. The Search Tool software can help you configure a usable IP camera automatically.

2.1.2 Configuration of the Network

Once your camera's IP address' **Subnet Mask, Gateway, DNS Server** is the same as your PC or router, you need configure the camera's Network parameter manually.

IP address: Fill in the IP address assigned and make sure it is in the same subnet as the **Gateway**, and the subnet should be the same as your computer or router. (i.e. the first three sections are the same)

Subnet Mask: The default subnet mask of the equipment is: 255.255.255.0. You can find the subnet mask from your PC or router.

Gateway: Make sure it is in the same subnet with PC's IP address .Here gateway is the LAN IP of your router.

Primary DNS: IP address of IPS network provider. You can also set it as the same as the Gateway.

NOTE: You can find out the **Subnet Mask, Gateway, Primary DNS** of your PC from the "Search Tool" software.

Http Port: LAN port assigned for the equipment, default is 99. You can change the port number to any one you want such as : 98,211,9999 etc.

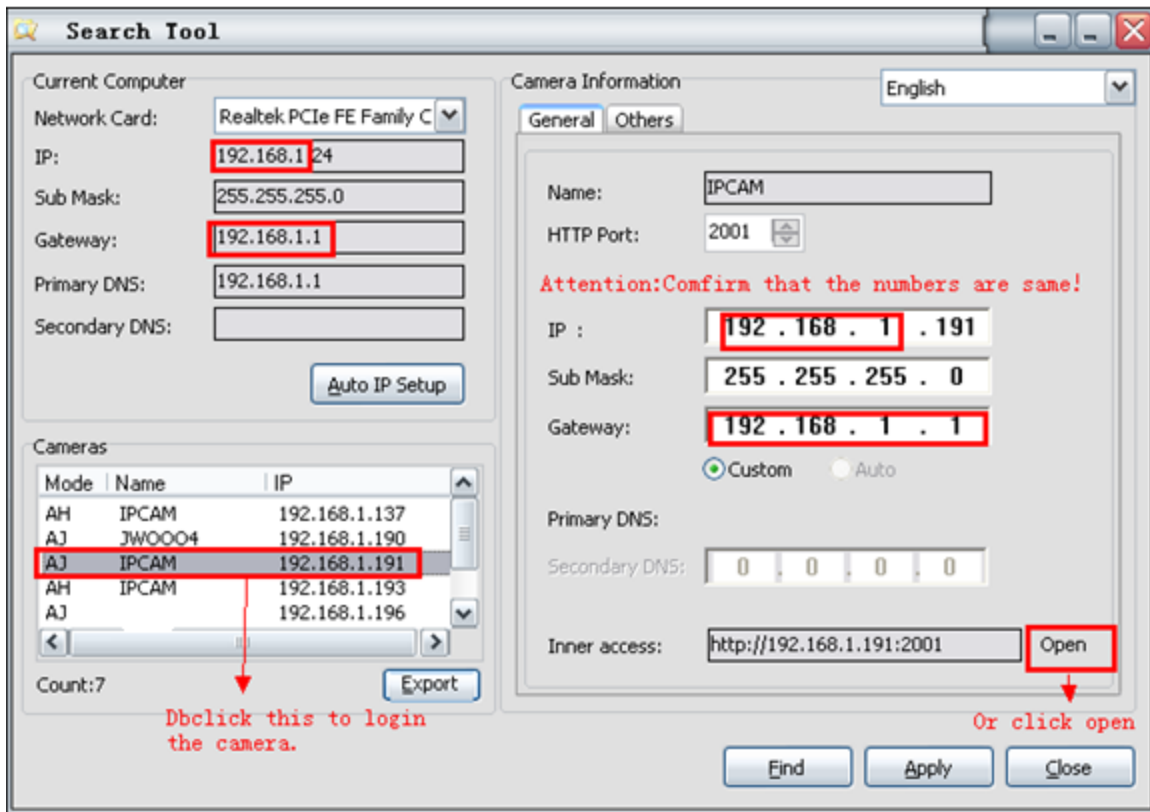


Figure 2.2

Change the camera information: If necessary (the numbers are not the same), you need to change the camera information, **Port**, **IP**, or **Gateway**. There are two ways to change them.

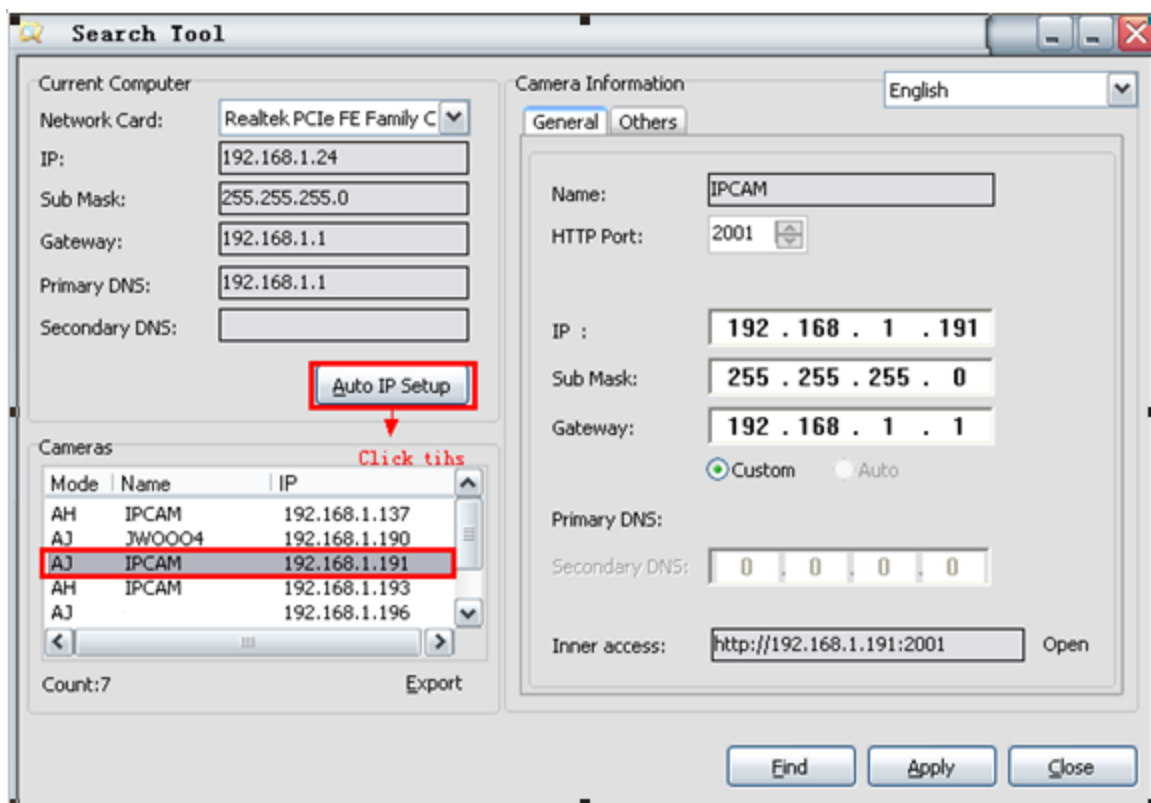


Figure 2.3

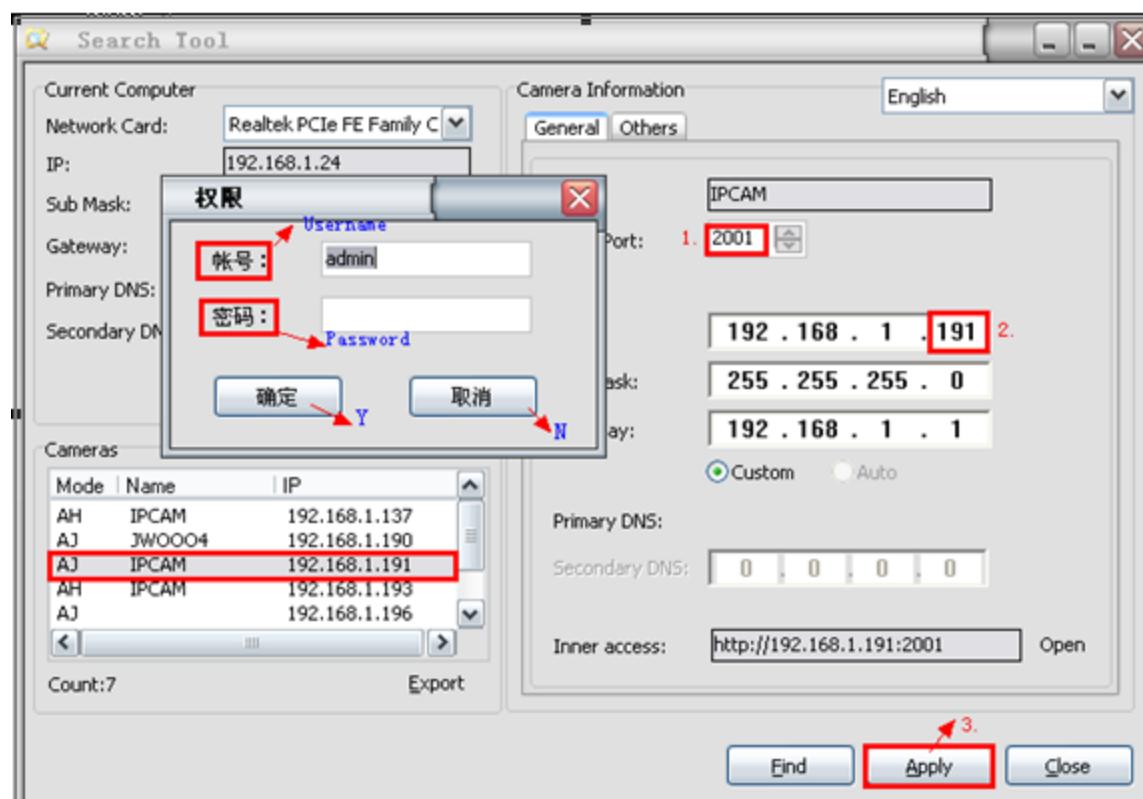


Figure 2.4

3: Real-time Video Demonstration.

3.1. Camera Login:

You can access the camera through **IP Camera Tool** or **IE, Firefox, Safari, Google Chrome or other standard browser** directly.

1. Double click the IP address of the IP Camera listed (Figure 2.1). The default browser you use will run automatically and come to the camera login interface. (Figure 3.1)
2. To access the camera by IE Browser directly, just type the camera's IP address, for example, if the camera's IP address is 192.168.1.99:99:

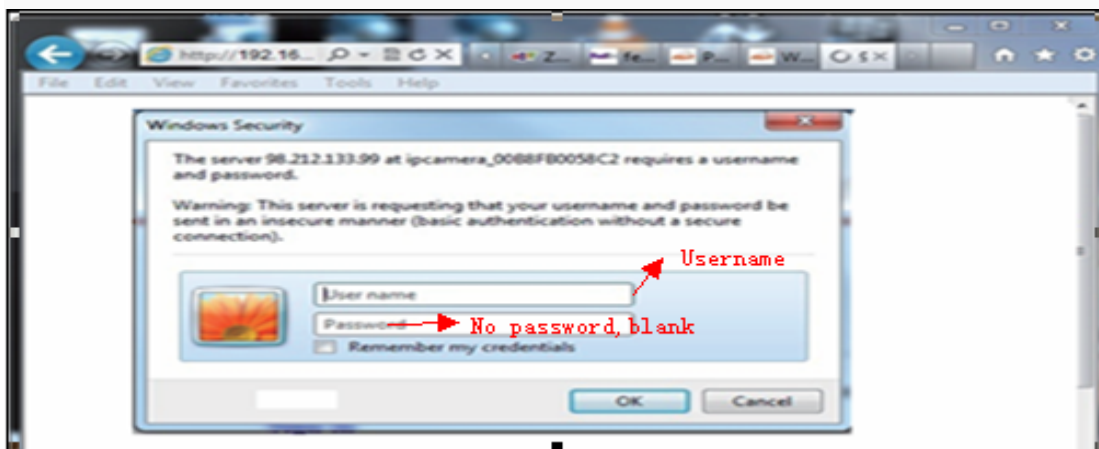
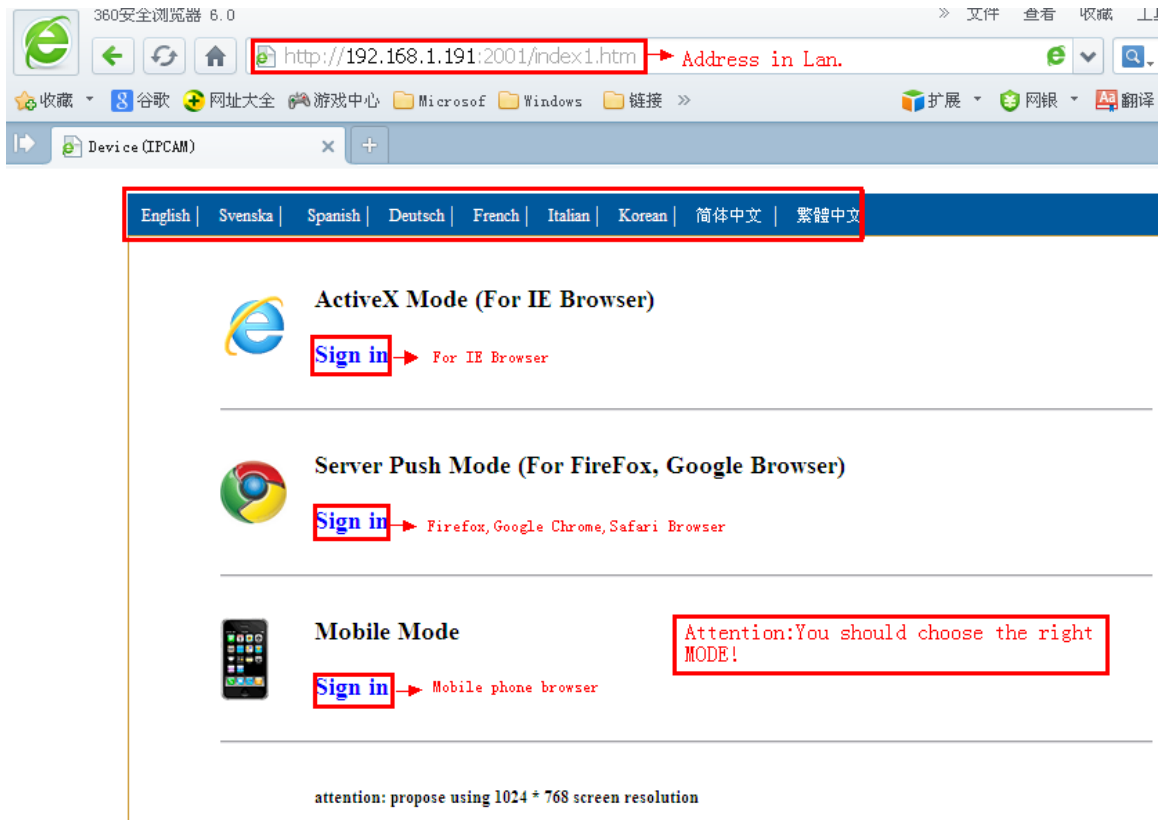


Figure 3.1

Default username: admin
Password: no password.

Input the correct user name and password, the Sign In interface will pop-up. There are three models to login (figure 3.2).



- (1) Active Mode (For IE Browser): available in IE6.0 or above explorer
- (2) "Server Push Mode": available in Firefox, Safari, and Google Chrome browser.
- (3) "Snap Motion Mode": available in Mobile phone

3.2. View via IE Browser.

Choose **Active Mode (For IE Browser)**, and sign in.

The first time login the camera, maybe get ActiveX prompt as the picture above, please click the prompt and choose **Run Add-on**, refresh and login the camera again, then will see live video, details as below:

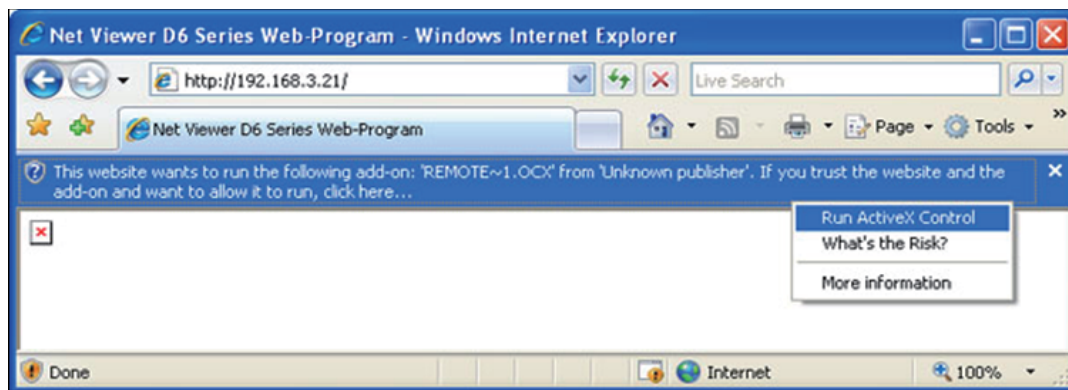


Figure 3.3 Windows XP system

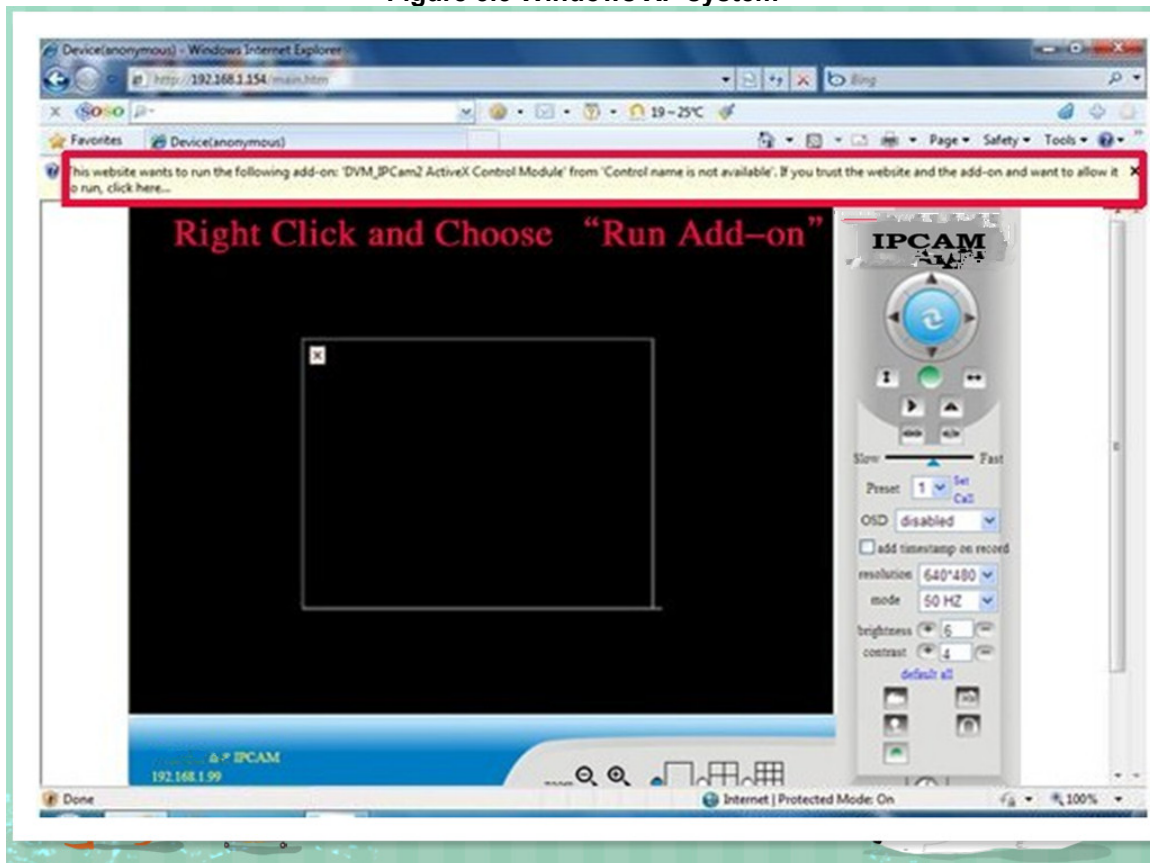


Figure 3.4 Win7 System

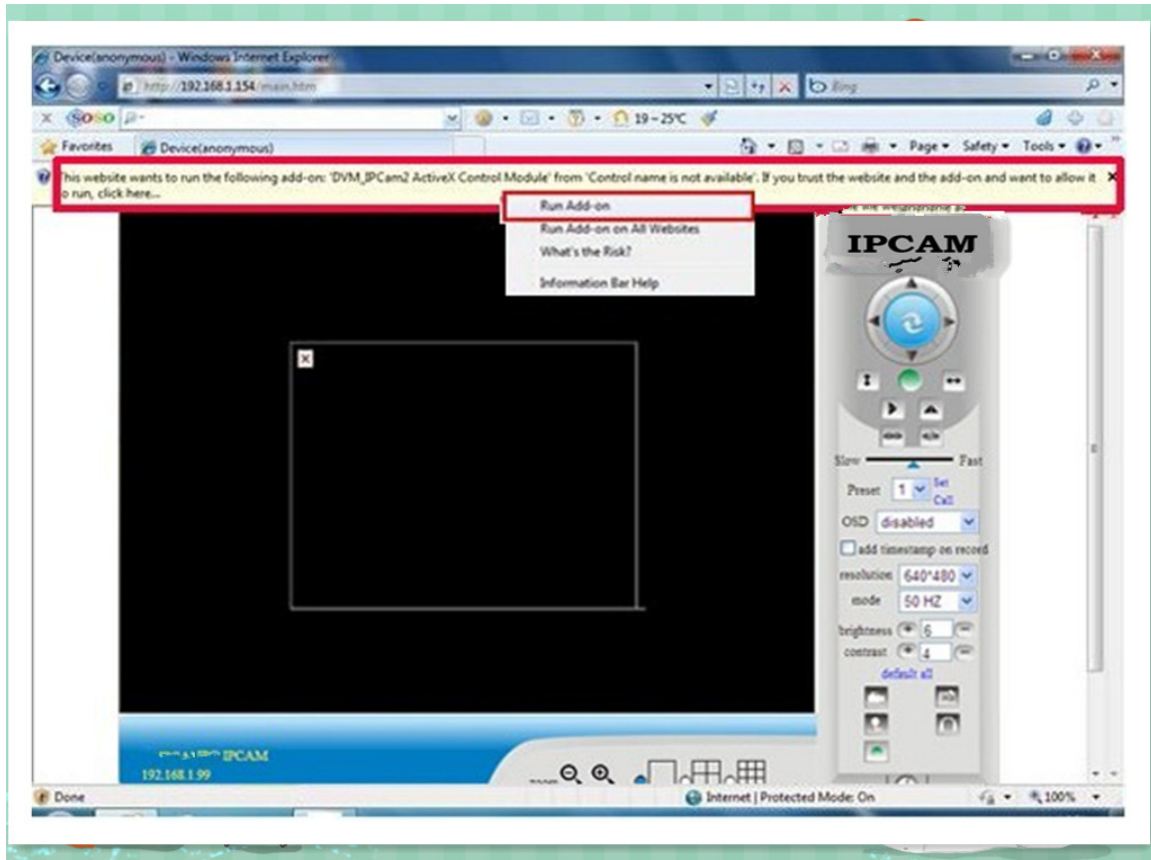


Figure 3.5

Note: If there is still no live video after run ActiveX, please try to enable the ActiveX options of IE security settings, please do the follow steps:

1. Close the firewall of your computer.
2. Change the ActiveX settings, "IE" browser > "Tool" > "Internet Options" > "Security"> "Custom Level" > "ActiveX control and Plug-ins", all the ActiveX options set to be "Enable": Especially:
 Enable: Download unsigned ActiveX controls
 Enable: Initialize and script ActiveX controls not marked as safe
 Enable: Run ActiveX controls and plu-ins

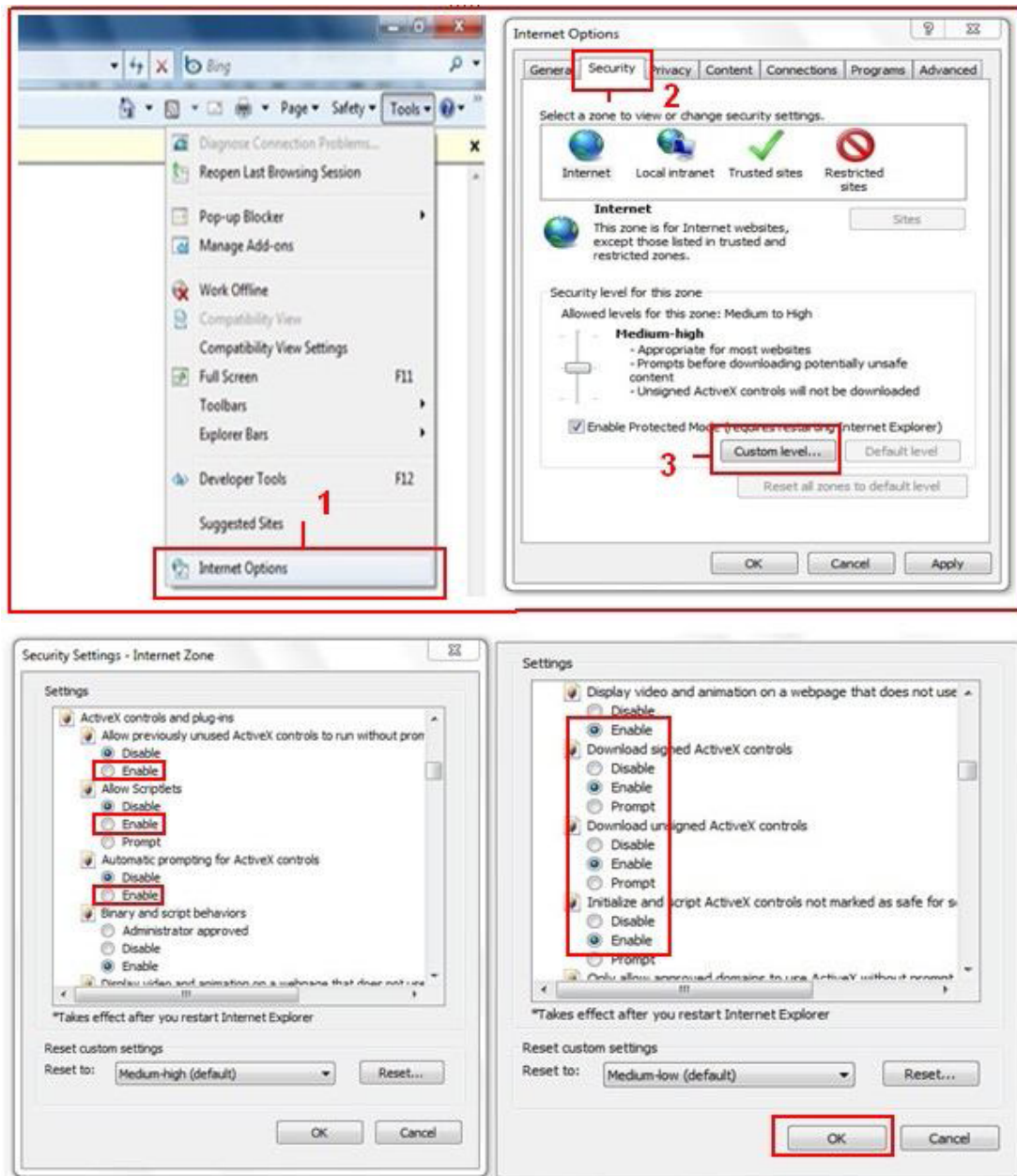


Figure 3.6

In Addition: you can also click “start” menu->“Internet Explorer”, choose “Internet attributes “ to enter, or via “Control Panel” ->“Internet Explorer”, enter to Security setting. 3. If there is still no image, please close your anti-virus software, and then try step 1 & 2 again.

4. If you allowed the Active X running, But still could not see live video, Only a Red

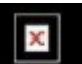

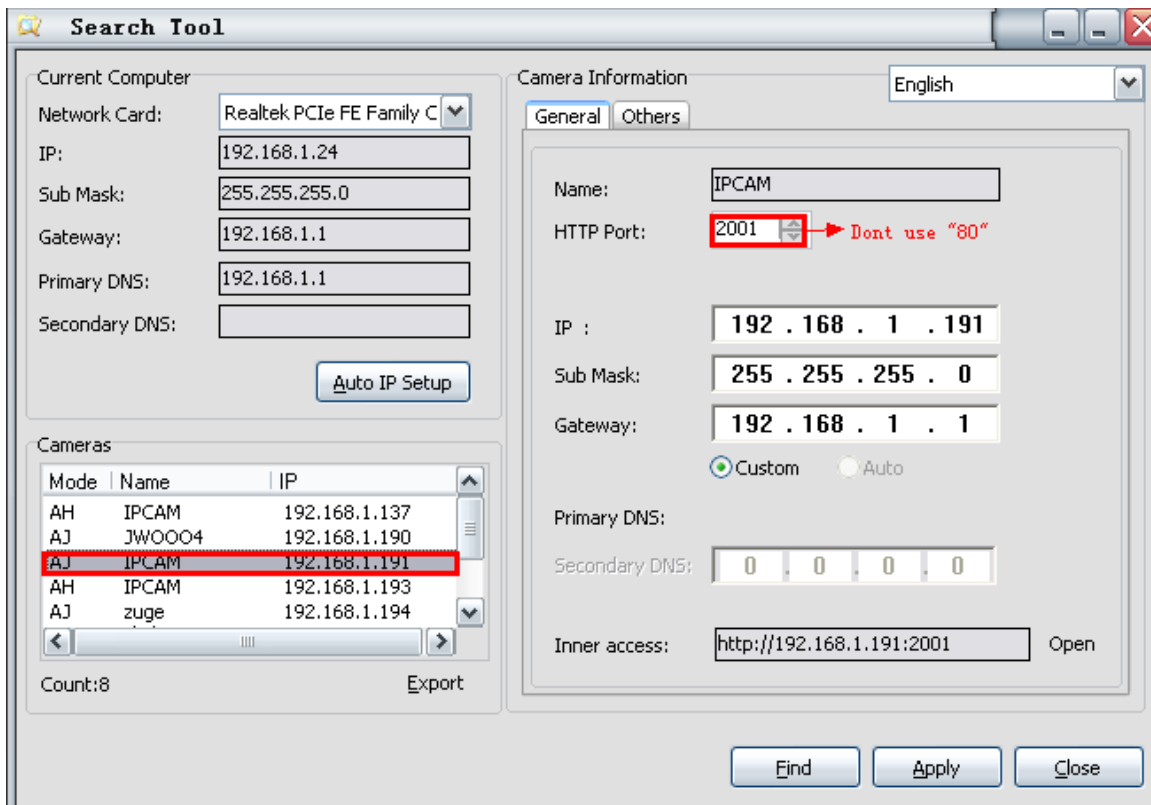
Cross  in the center of the video, And the device status light change to yellow color , not green please change another port number to try, Don't use port 80, use other port such as 99, 199 etc.

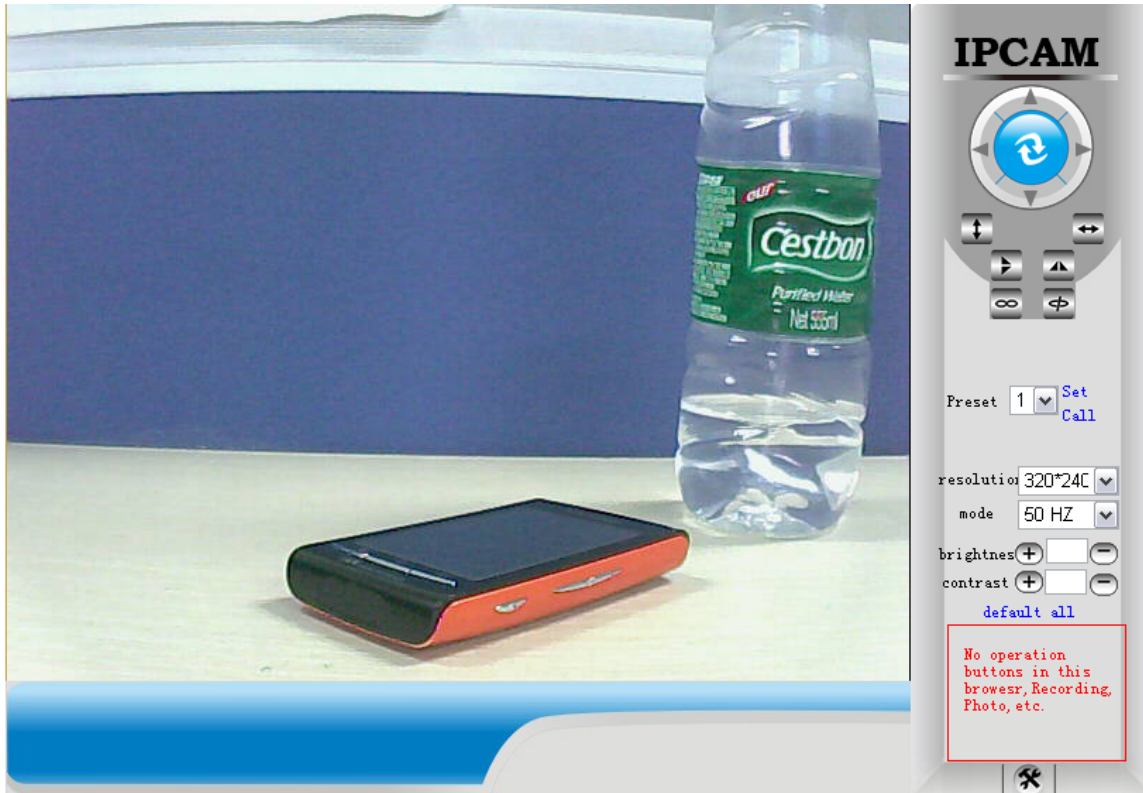
Figure 3.7



NOTE: Make sure that the firewall or anti-virus software doesn't block the software or ActiveX. If you couldn't see live video, please close your firewall or anti-virus software, and try again.

3.3. View via Safari, Firefox, Google Browser

Choose Server Push Mode (For Safari, Firefox, Google Browser), and sign in
 Server Push Mode doesn't support ActiveX, so some functions are not available, such
 As Record, Audio, Talk, Speaker, The speed control bar, Zoom etc.), if you want to use
 these functions, please use IE Browser.
 The Control Interface in this mode is as
 bellow:



3.4. Main Menu interface introduction

Take the “Active Mode(For IE Browser)” For example:

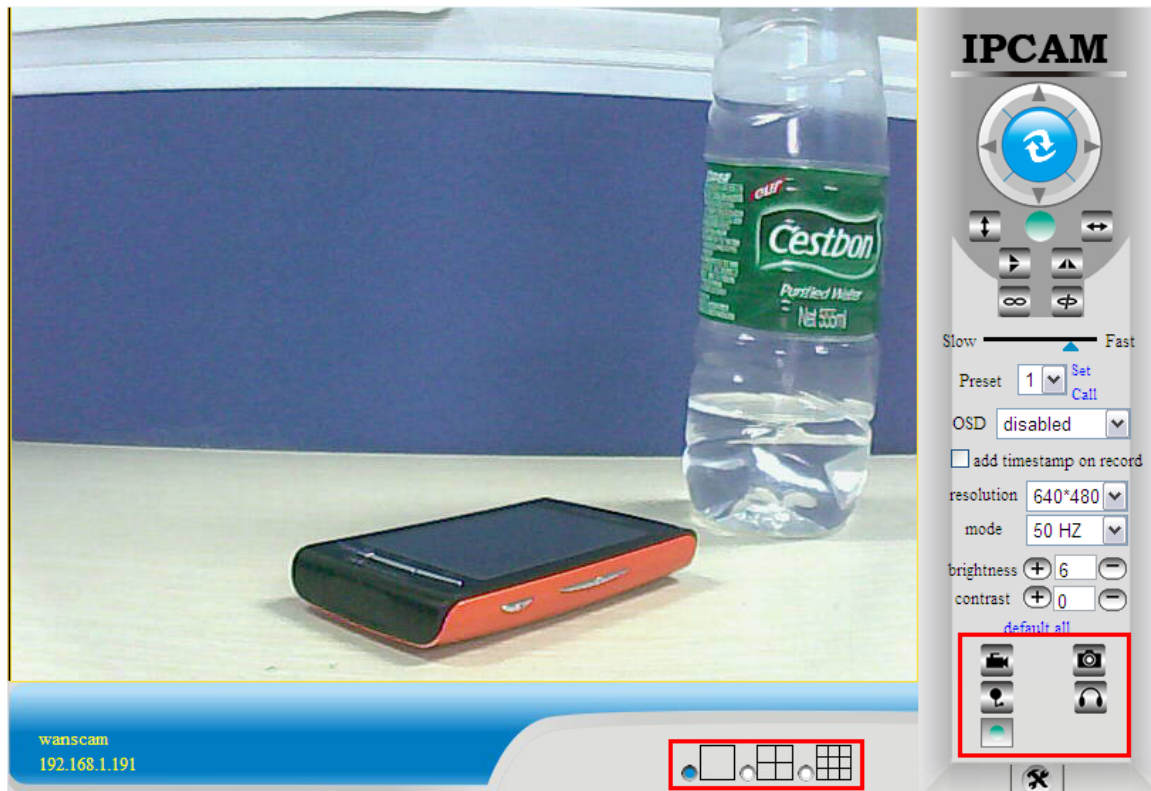


Figure 3.8



Make the camera back to the center
Pan right and left
Tilt up and down

The Pan/Tilt Feature only work

when the cameras have this Pan/Tilt function.



This option enables log detection. After the online user clicks this button, a log is entered into the camera's Log Data documenting the IP address of users who have accessed the IP camera. This Option enables alarm detections too.



This button make the camera Vertical cruise (for the Pan/Tilt Cams).



This button make the camera Level cruise (for the Pan/Tilt Cams).



This button flips the image vertically.



This button flips the image horizontally.



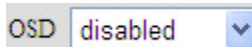
This button for turn on and turn off the IR LED Light.



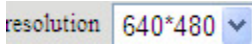
Control the speed of the Pan/tilt. Only work for the Pan/tilt Cams.



This button for setting the Preset of the camera. Only work for Pan/tilt Cams



This setting changes the color of the OSD lettering.



This setting changes the image resolution.



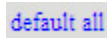
This setting changes the image frequency.



This setting changes the image brightness.



This setting changes the image contrast.



This option resets all main menu options to factory default.



This option opens the camera's recording functionality menu.



This option takes a snapshot of the current screen and saves the snapshot to the PC's Hard Drive.



This option enables User-to Camera audio. If the online user



This option enables Camera-to-User audio. If the online user has speakers connected and configured to their PC, clicking this option will allow them to hear audio from the location of the camera.



This option enables the camera's Network Indicator LED light turn on or turn off.



This button opens the IP camera's Backend Menu



These options enable single view, quad screen view, or 9 screen view: This function serves no purpose unless you have more than one camera connected and configured to your interface.

* Please refer to section 8.1.1 Multi-Device Settings*



This feature is only supported by the PTZ IP Camera. Enable the Zoom Function.

3.5. Administrator Setting Instruction

When login as Administrator, you can enter the IP Camera for Administrator. Administrator supports all the settings and operations of the camera; you can set and control it freely There are some special functions only for administrator as below:

Alias setting : You can set your favorite device aliases, that is the name of your camera.

Date&Time set : Setting the date and time.

User settings : Can be set up to 8 users. On this page you can set up accounts of the user name, password, as well as in their packet (administrator, operator, visitor).

- **Visitor** : In this mode, you can only visit.
- **Operator** : You can set the direction of the lens device, set the video screen's brightness, contrast and other parameter.
- **Administrator** : You can set the device advanced configuration.

UPnP set : If you want internet access IPCAM, to ensure that the state is successful UPnP.

Device Firmware Upgrade: The system firmware update the device firmware and application of Web UI

Restore factory settings : When there is not a response when the error occurred, you can restore the factory settings to resolve the device.

Reboot the device : You can reboot the device.

Back: Return to monitor mode.

| Device Status | |
|--|---|
| Device ID | 00D6FB014AA9 |
| Device Firmware Version | 47.37.2.48 |
| Device Embedded Web UI Version | 0.10.4.20 |
| Alias | IPCAM |
| Alarm Status | None |
| DDNS Status | 88safe Succeed |
| UPnP Status | UPnP Failed: Rejected by UPnP Device, Maybe Port Conflict |
| P2P Status | No Action |
| MSN Status | No Action |
| <input type="button" value="Refresh"/> | |

| |
|---|
| Device Info |
| Alias Settings |
| Date&Time Settings |
| Users Settings |
| Multi-Device Settings |
| Basic Network Settings |
| Wireless Lan Settings |
| ADSL Settings |
| UPnP Settings |
| DDNS Service Settings |
| Mail Service Settings |
| Ftp Service Settings |
| MSN Settings |
| Alarm Service Settings |
| PTZ Settings |
| Decoder Settings |
| Upgrade Device Firmware |
| Backup & Restore Settings |
| Restore Factory Settings |
| Reboot Device |
| Log |
| GotoCamera |
| Back |

3.5.1 Multi-Device Settings

- Add a local area network equipment

In the multi-device configuration page, you can see all the equipment inside the LAN. The first device is the default device. You can add more devices listed in the list of equipment. Embedded applications, up to 4 devices at the same time-line. Click the “second road equipment” and double-click “Current list of devices in the LAN” in the device entry name, host address, Http port will automatically be filled, require the user to fill in the correct account name and password, click “Add.” Repeat this process you can continue to add devices. Finally do not forget to click on the “Settings” button.

| Device Status | |
|-------------------------------|---|
| Device ID | 00D6FB014AA9 |
| Device Firmware Version | 47.37.2.48 |
| Device Embeded Web UI Version | 0.10.4.20 |
| Alias | IPCAM |
| Alarm Status | None |
| DDNS Status | 88safe Succeed |
| UPnP Status | UPnP Failed: Rejected by UPnP Device, Maybe Port Conflict |
| P2P Status | No Action |
| MSN Status | No Action |
| Refresh | |

Device Info
Alias Settings
Date&Time Settings
Users Settings
Multi-Device Settings
Basic Network Settings
Wireless Lan Settings
ADSL Settings
UPnP Settings
DDNS Service Settings
Mail Service Settings
Ftp Service Settings
MSN Settings
Alarm Service Settings
PTZ Settings
Decoder Settings
Upgrade Device Firmware
Backup & Restore Settings
Restore Factory Settings
Reboot Device
Log
GotoCamera
Back

Figure 3.9

● Add a device on the internet

First, make sure you want to add devices to access via IP address or domain name. For example: <http://202.96.133.134:9008> or <http://IPcam.dyndns.org:9008>. And then fill in host address: 202.96.133.134 HttpPort: 9008 or host address: IPcam.dyndns.org Http port: 9008. and fill in the correct account name and password to the last click on “Add.” Repeat the above steps can add other devices



Figure 3.10

3.5.2 Network Settings

| Basic Network Settings | |
|--|--------------------------|
| Obtain IP from DHCP Server | <input type="checkbox"/> |
| IP Addr | 192.168.1.191 |
| Subnet Mask | 255.255.255.0 |
| Gateway | 192.168.1.1 |
| DNS Server | 192.168.1.1 |
| Http Port | 2001 |
| <input type="button" value="Submit"/> <input type="button" value="Refresh"/> | |

Device Info

Alias Settings

Date&Time Settings

Users Settings

Multi-Device Settings

Basic Network Settings

Wireless Lan Settings

ADSL Settings

UPnP Settings

DDNS Service Settings

Mail Service Settings


Figure 3.11

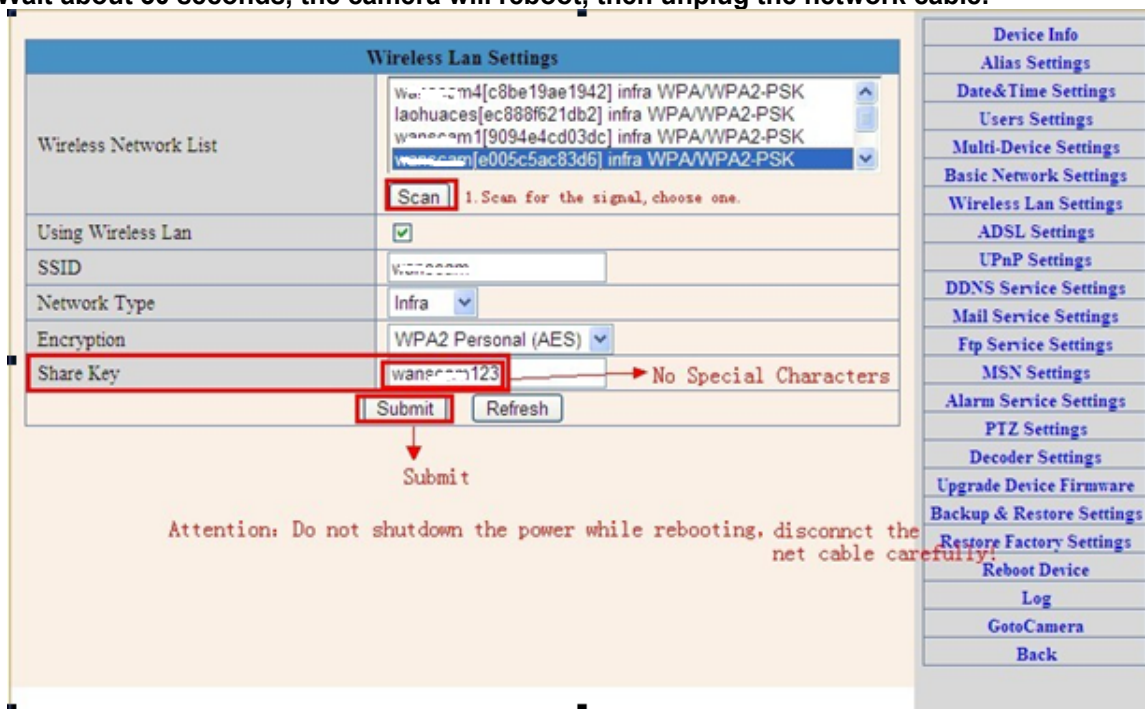
This sector is for DHCP and IP configuration, port forwarding is needed, If you want to set IP address, please fill in the relative IP address、subnet mask, gateway, DNS server, Http port;

3.5.3 Wireless Settings

1. Make sure the router is a wireless router.
2. Make sure the Wi-Fi antenna tighten up.

3. Make sure whether there is encryption of the WLAN of the router, if there is encryption, keep the key. **Attention: No special characters in the SHARE KEY.**

4. Login the camera, click  > “Wireless Lan Settings” > “Scan”, please scan 2times, then you will find the WLAN from the list, choose the one you use.
5. If there is no encryption, just click “Submit”, if there is encryption, please input the key, then click “Submit”.
6. Wait about 30 seconds, the camera will reboot, then unplug the network cable.



Wireless Lan Settings

Wireless Network List

- Wanecom4[c8be19ae1942] infra WPA/WPA2-PSK
- laohuaces[ec88f621db2] infra WPA/WPA2-PSK
- wanecom1[9094e4cd03dc] infra WPA/WPA2-PSK
- Wanecom[e005c5ac83d6] infra WPA/WPA2-PSK

Scan 1. Scan for the signal, choose one.

Using Wireless Lan ☒

SSID

Network Type

Encryption

Share Key **No Special Characters**

Submit **Refresh**

Submit

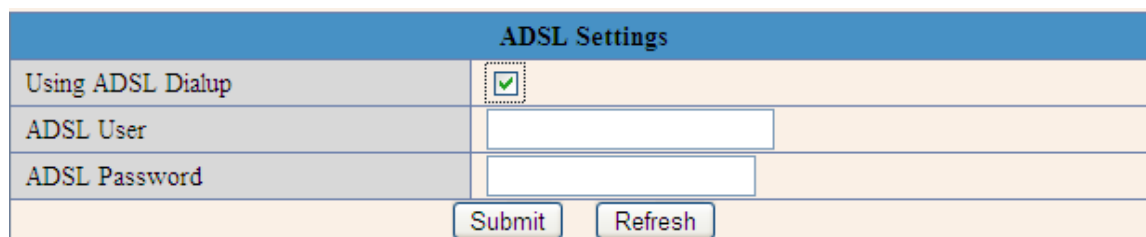
Attention: Do not shutdown the power while rebooting, disconnect the net cable carefully!

Device Info
Alias Settings
Date&Time Settings
Users Settings
Multi-Device Settings
Basic Network Settings
Wireless Lan Settings
ADSL Settings
UPnP Settings
DDNS Service Settings
Mail Service Settings
Ftp Service Settings
MSN Settings
Alarm Service Settings
PTZ Settings
Decoder Settings
Upgrade Device Firmware
Backup & Restore Settings
Restore Factory Settings
Reboot Device
Log
GotoCamera
Back

Figure 3.12

3.5.4 ADSL Setting

When your device directly connected to the Internet via ADSL, when you need to enter fill in your ISP service providers obtain from the account name and password. Duly completed and click “Settings” button. Your device can connect to the internet has.



ADSL Settings

Using ADSL Dialup ☒

ADSL User

ADSL Password

Submit **Refresh**

Figure 3.13

3.5.5 Dynamic DNS Setting (DDNS)

3.5.5.1 DDNS Setting:

(1): Click  > “DDNS Service Settings”.

| DDNS Service Settings | |
|-----------------------|---------------------|
| DDNS Service | vipcam.org |
| DDNS User | None |
| DDNS Password | Oray.net |
| | DynDns.org(dyndns) |
| | DynDns.org(statdns) |
| | DynDns.org(custom) |
| | 3322.org(dyndns) |
| | 3322.org(statdns) |
| | 88safe.com(dyndns) |
| | vipcam.org |

Figure 3.14

(2): Choose the DDNS, there are 4 kinds of options:

(1): Manufacturer’ DDNS: We provide a free DDNS: **vipcam.org**. This domain is provided by manufacturer.

Note: 88safe.com is old DDNS provided by manufacturer also. If you want to use the manufacturer’s free DDNS, Please Choose “ vipcam.org ”.

| DDNS Service Settings | |
|--|------------|
| DDNS Service | vipcam.org |
| DDNS User | X1129 |
| DDNS Password | 047951 |
| <input type="button" value="Submit"/> <input type="button" value="Refresh"/> | |

Each camera have a defferent DDNS ID.
You can find out your DDNS ID from a mark on the camera.

This is the DDNS User

IP CAMERA
User: admin Password: none
Power adapter: DC5V/2000mA
Factory IP: http://192.168.1.99:99
Remote Address: X1129.vipcam.org
DDNS Password: 047951

DDNS Service Settings

Figure 3.15

(2): The Third Party DDNS: This domain is provided by the 3rd party, such as DynDNS, Oray, 3322

If you use the third party DDNS, please choose the server you need, such as “3322.org” or “dyndns.org” as below:

| DDNS Service Settings | |
|--|--|
| DDNS Service | DynDns.org(dyndns) ▼ |
| DDNS User | ipcam |
| DDNS Password | ●●●●●● |
| DDNS Host | ipcam.dyndns.org |
| DDNS or Proxy Server | |
| DDNS or Proxy Port | |
| Re-Update Ignoring All Errors | <input type="checkbox"/> never do this unless your hostname has been |
| proxy config is needed if the device is in China Mainland or HongKong | |
| <input type="button" value="Submit"/> <input type="button" value="Refresh"/> | |

Figure 3.16

| DDNS Service Settings | |
|--|---------------------|
| DDNS Service | 3322.org(statdns) ▼ |
| DDNS User | ipcam |
| DDNS Password | ●●●●●● |
| DDNS Host | ipcam |
| <input type="button" value="Submit"/> <input type="button" value="Refresh"/> | |

Figure 3.17

You have to register an account firstly, keep the user, password, host, then fill in it.
 Note: Only one DDNS can be chosen, for example, if you use manufacturer's DDNS, the 3rd party one won't work, if use the 3rd party DDNS, the manufacturer's one won't work.

3.5.5.2 Port forwarding settings:

1: Setting the IP address of the camera

The default IP address of the camera is : [Http://192.168.1.99:99](http://192.168.1.99:99) The default IP address of camera you can change to any other one you like, such as:

Change to: 192.168.1.109:109. or 192.168.1.99:90 etc.

Click "Apply">fill in the user name and password of the camera>click "OK" then the camera will reboot, wait about 30 seconds. You will get your changed IP address.

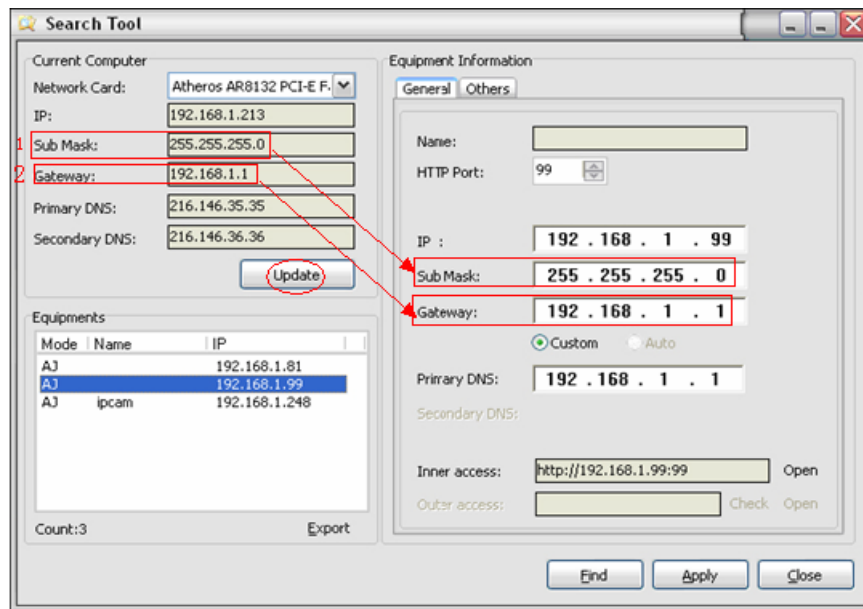


Figure 3.18

Make sure the "Subnet Mask", "Gateway", "DNS Server" is the same as your router.

2: Setting Port Forwarding in the router.

This is the most important step. Set port forwarding in router refer to the IP of your camera correctly, then the DDNS will work. Because there are so many kinds of routers from all over the world, so it's difficult to show a fix steps, but there are some samples of different routers' port forwarding settings as below, just for reference:

TP-LINK:

- (1) Login the router.
- (2) Choose "Forwarding", select "Virtual Servers"



- (3) Click the Add New button, pop-up below:

Add or Modify a Virtual Server Entry

| | | |
|---|---|---------------|
| Service Port: | <input type="text"/> | (XX-XX or XX) |
| IP Address: | <input type="text"/> | |
| Protocol: | <input type="text" value="ALL"/> | |
| Status: | <input type="text" value="Enabled"/> | |
| Common Service Port: | <input type="text" value="-Select One-"/> | |
| <input type="button" value="Save"/> <input type="button" value="Return"/> | | |

Fill the service port (except 80), IP address of the camera, then click Save
The port and IP address should be the same as Camera.

BELKIN:

(1) Login the router.

(2) Choose “Firewall”, select “Virtual Servers”

(3) Input the port (**except 80**) and IP address, then click save.

Note: The port and IP address should be the same as Camera.

BELKIN Router Setup Home | Help | Logout | Internet

LAN Setup
 LAN Settings
 DHCP Client List
 Static Routing
Internet WAN
 Connection Type
 DNS
 MAC Address Cloning
Wireless
 Channel and SSID
 Security
 Wi-Fi Protected Setup
 Guest Access
 Use as Access Point
QoS
 QoS Profiles
 Traffic Statistics
Firewall
 Virtual Servers
 MAC Address Filtering
 Access Control
 DMZ
 DDNS
 WAN Ping Blocking
 Security Log
Utilities
 Restart Router
 Restore Factory Defaults
 Save/Backup Settings
 Restore Previous Settings
 Firmware Update
 System Settings

Firewall > Virtual Servers

This function will allow you to route external (Internet) calls for services such as a web server (port 80), FTP server (Port 21), or other applications through your Router to your internal network. [More Info](#)

Add
 Clear entry

| | Enable | Description | Inbound port | Type | Private IP address | Private port |
|----|-------------------------------------|-------------|--------------|------|--------------------|--------------|
| 1 | <input checked="" type="checkbox"/> | IPCAM | 101 | BOTH | 192.168.2.56 | 101 |
| 2 | <input type="checkbox"/> | | | BOTH | 192.168.2. | |
| 3 | <input type="checkbox"/> | | | BOTH | 192.168.2. | |
| 4 | <input type="checkbox"/> | | | BOTH | 192.168.2. | |
| 5 | <input type="checkbox"/> | | | BOTH | 192.168.2. | |
| 6 | <input type="checkbox"/> | | | BOTH | 192.168.2. | |
| 7 | <input type="checkbox"/> | | | BOTH | 192.168.2. | |
| 8 | <input type="checkbox"/> | | | BOTH | 192.168.2. | |
| 9 | <input type="checkbox"/> | | | BOTH | 192.168.2. | |
| 10 | <input type="checkbox"/> | | | BOTH | 192.168.2. | |

Figure 3.19

DLINK:

(1) Login the router.

(2) Choose “Advanced”, select “Virtual Servers”

(3) Input the port, IP address, Protocol, then click save.

Note: The “public port” & “private port” should be the same as camera’s port, choose the protocol to be “both”.

D-Link

DIR-601

SETUP ADVANCED TOOLS STATUS SUPPORT

VIRTUAL SERVER

The Virtual Server option allows you to define a single public port on your router for redirection to an internal LAN IP Address and Private LAN port if required. This feature is useful for hosting online services such as FTP or Web Servers.

Save Settings Don't Save Settings

24 -- VIRTUAL SERVERS LIST

| Name | IP Address | Port | Traffic Type | Schedule |
|------------|---------------|------|--------------|-----------|
| rivomaxcam | 192.168.0.107 | 81 | Both | Always |
| | 192.168.0.107 | 81 | 256 | Allow All |
| | 0.0.0.0 | 0 | TCP | Always |
| | 0.0.0.0 | 0 | 6 | Allow All |
| | | 0 | TCP | Always |

Helpful Hints...

Check the **Application Name** drop down menu for a list of predefined server types. If you select one of the predefined server types, click the arrow button next to the drop down menu to fill out the corresponding field.

You can select a computer from the list of DHCP clients in the **Computer Name** drop down menu, or you can manually enter the IP address of the LAN computer to which you would like to open the specified port.

Select a schedule for when the virtual server will be enabled. If you do not see the schedule you need in

Figure 3.20

After all these 4 steps done, then you can use the DDNS freely, check the DDNS status from the camera as below, and get the link of DDNS for internet view.

Step: "Login">">">"Device Info":

Device Status

| | |
|--------------------------------|---|
| Device ID | 0008FB006C21 |
| Device Firmware Version | 0.37.2.43 |
| Device Embedded Web UI Version | 0.9.4.12 |
| Alias | WANSCAM118 |
| Alarm Status | None |
| DDNS Status | Vipcam Succeed Manufacturer's DDNS |
| UPnP Status | UPnP Succeed |
| P2P Status | No Action |
| MSN Status | No Action |

Refresh

Device Info

- Alias Settings
- Date & Time Settings
- Users Settings
- Multi-Device Settings
- Basic Network Settings
- Wireless Lan Settings
- ADSL Settings
- UPnP Settings
- DDNS Service Settings
- Service Settings
- MSN Settings
- Alarm Service Settings
- PTZ Settings
- Decoder Settings

Figure 3.21

3.5.5.3 DDNS Register

For example, you can go to DynDNS website to register a free account.
<http://www.dyndns.org> / <http://www.dyndns.com>.

Step1: enter <http://www.dyndns.com/> and Create Account

Rock solid, scalable DNS that just works.

Whether you are a home user, a small & medium business, or all the way up to enterprise... we understand you are busy! Let us simplify your to do list with our proven services.

GET STARTED

Username

Password

Log in

[Forgot Your Password?](#)

[Create an Account](#)

Figure 3.22

Step2: Set the username and password as below:

Create an account or log in to continue

Username kevinzhu
Username should start with letter and have 2-25 alphanumeric characters.

Password
Confirm password

Email ipcame@qq.com
Confirm Email ipcame@qq.com

Security Image
7 3 4 0 4
Enter the numbers from the above image:
73404

Subscribe to ☒ DynDNS.com newsletter (1 or 2 per month)
☐ Dyn Inc. press releases

☒ I agree with the [acceptable use policy \(AUP\)](#) and [privacy policy](#).

Create Account

Already Registered?
Username
Password
Log in
[Forgot your password?](#)

TRUSTe
CERTIFIED PRIVACY

Figure 3.23

Step3: After a minute, you will receive a E-mail from DynDNS Support and it will give you a confirmation address

(e.g. <https://www.dyndns.com/confirm/create/ONMzltcCBk6mcHJI5MhVD0g>)

One more step to go...

We've sent an email to ipcame@qq.com, to verify your account. Please check your inbox and click on the confirmation link.

If you do not receive the email in the next few minutes you can try [resending it](#).

Thanks for choosing DynDNS.com!



Figure 3.24

Your DynDNS.com Account 'kevinzhu' has been created. You need to visit the confirmation address below within 48 hours to complete the account creation process:

<https://www.dyndns.com/confirm/create/ONMz1tCBk6mcHJI5MhVD0g>

Our basic service offerings are free, but they are supported by our paid services. See <http://www.dyndns.com/services/> for a full listing of all of our available services.

If you did not sign up for this account, this will be the only

Figure 3.25

Step4: When the Account Confirmed, login and start using your account. Choose Add Host Services(Figure 3.25) and enter Add New Hostname (Figure 3.26)page.




| My Services | Billing | Account Settings |
|---|--|---|
|  View, modify, purchase, and delete your services. |  Update your billing information, complete a purchase, and view invoices. |  Update your email address, set preferences, and delete your account. |
| My Zones/Domains | View Shopping Cart | Change Email Address |
| Add Zone/Domain Services | Active Services | Change Password |
| My Hosts | Order History | Change Username |
| Add Host Services | Billing Profile and Vouchers | Contact Manager |
| Dynamic DNS Pro | Renew Services | Mailing Lists |
| Dynect SMB | Auto Renew Settings | Move Services |
| Internet Guide | Sync Expirations | Preferences |
| SendLabs SMTP | | Close Account |
| SSL Certificates | | |

Figure 3.26

Hostname: .

Please enter valid hostname label to add new hostname (2-24 characters).

Wildcard: ☐ create "*.host.dyndns-yourdomain.com" alias
only for DynDNS Pro users
(for example to use same settings for
www.host.dyndns-yourdomain.com)

Service Type: ☒ Host with IP address
☐ WebHop Redirect (URL forwarding service)
☐ Offline Hostname

IP Address:

[Your current location's IP address is 116.30.138.72](#)

TTL value is 60 seconds. [Edit TTL...](#)

Mail Routing: ☐ I have mail server with another name and would like to add MX hostname...

No need to choose

Figure 3.27

Step5: On the Add New Hostname page.

- 1) input your Hostname.
- 2) choose Host with IP address
- 3) click [Use auto detected IP address xxx.xx.xx.xxx](#). Then click Create Host.
- 4) after you have added a New Hostname , you need "Proceed to checkout"

Shopping Cart

[Proceed to checkout >](#)

⚡ Upgrade Options

Free accounts allow only two Dynamic DNS hosts.

- to add more and enjoy additional benefits for only \$15.00 per year, [purchase Dynamic DNS Pro](#).
- to get Dynamic DNS for **your own domain**, use [Custom DNS](#).

Dynamic DNS Hosts

| | | | |
|----------------------|---|------------------------|---------------|
| kevinsafe.dyndns.org | - | remove | \$0.00 |
| Order Total: | | | \$0.00 |

Figure 3.28

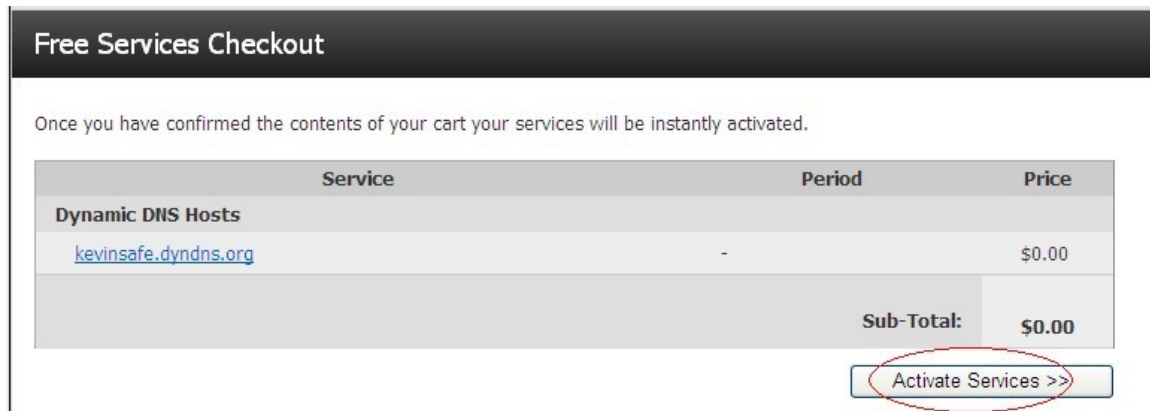


Figure 3.29



Figure 3.30

Step6: Now you obtained a Dynamic Domain Name(Figure3.30),and can use it in the DDNS Service Settings(details: 3.5.5)

Notice:

If you have a dynamic IP address, Make sure you have download the DynDNS's "Update Client". And installed it succeed in your computer.

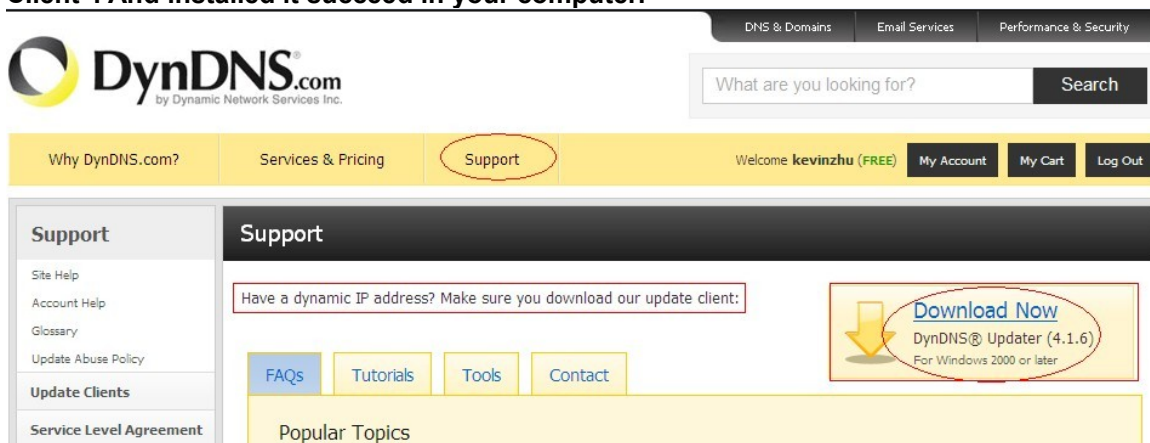


Figure 3.31

3.5.6 E-mail and FTP service Settings

| Mail Service Settings | |
|--|---|
| Sender | hyg339814983@gmail.com |
| Receiver 1 | hyg339814983@gmail.com |
| Receiver 2 | |
| Receiver 3 | |
| Receiver 4 | |
| SMTP Server | smtp.gmail.com → Make sure your mail has enabled SMTP |
| SMTP Port | 465 |
| Transport Layer Security Protocol | TLS |
| Gmail only support TLS at 465 port and STARTTLS at 25/587 port. | |
| Need Authentication | <input checked="" type="checkbox"/> |
| SMTP User | hyg339814983 → Username of your mail |
| SMTP Password | → Password of your mail. |
| | Test Please set at first, and then test. |
| Report Internet IP by Mail | <input checked="" type="checkbox"/> |
| <input type="button" value="Submit"/> <input type="button" value="Refresh"/> | |
| Please submit at first, then test. | |

- Device Info
- Alias Settings
- Date&Time Settings
- Users Settings
- Multi-Device Settings
- Basic Network Settings
- Wireless Lan Settings
- ADSL Settings
- UPnP Settings
- DDNS Service Settings
- Mail Service Settings**
- Ftp Service Settings
- MSN Settings
- Alarm Service Settings
- PTZ Settings
- Decoder Settings
- Upgrade Device Firmware
- Backup & Restore Settings
- Restore Factory Settings
- Reboot Device
- Log
- GotoCamera
- Back

Figure 3.32

The above setting is a preparation for the alarm function, the sender should be entered the sender's email address, recipient 1、2、3、4 is filled with recipient E-mail address; SMTP server should be filled with the sender email SMTP server, e.g. the sender email address is abc@163.com, and enter mail.163.com. Generally SMTP port is 25, do no need to change; when needs to check, just tick it, and enter SMTP user and SMTP password, both of them are provided by Email provider, and test according to reference; when needs to send, please tick Email notification Internet IP address; The e-mail server and other information can be obtained from the mail service provider the email notification is image captured when alarming if no email notification is needed when alarming, and then no need to enter.

Set up FTP service, you can fill in parameters like following:

| Ftp Service Settings | |
|--|--|
| FTP Server | |
| FTP Port | 21 |
| FTP User | |
| FTP Password | |
| FTP Upload Folder | |
| FTP Mode | PORT |
| | Test Please set at first, and then test. |
| Upload Image Now | <input type="checkbox"/> |
| <input type="button" value="Submit"/> <input type="button" value="Refresh"/> | |

Figure 3.33

The above setting is equally similar to Mail Server Settings, when alarming is Triggered, it also sends image, please enter FTP server, FTP port, FTP user, FTP password, FTP upload directory, FTP mode, FTP mode has two options: PORT and POSV. If needs a quick upload image, then select it, edit upload image interval (second) .
Pay attention: To make Mail service and FTP function work, you should make sure that your camera can be accessed from internet, besides, all the parameters should be right.

3.5.7. Alarm Service Settings

As shown below, there are two modes of alarm trigger, first one is motion detection, please refer to below interface, the sensitivity of motion detection can be adjusted according to the users' requirement, the higher the number is, the lower sensitivity is; Another mode is input alarm, when connected, it triggers alarm through alarm input signal which connects to linkage alarm GPIO;

When triggered, there are 3 alarm modes: one is IO alarm linkage, camera connects with linkage alarm box through GPIO, sound the siren ; the second is email notification, send email with images captured; the last is upload pictures alarm, as the way mentioned before FTP upload pictures alarm, Upload pictures interval (second) keeps consisten nt with the mentioned upload pictures interval of Ftp service settings. The schedule refers to arming time, as the selected time interval: 0: 00 minute per week to 0: 45 minutes and Monday 1: 00 hour and 2: 00 hour

| Alarm Service Settings | |
|--|-------------------------------------|
| Motion Detect Armed | <input checked="" type="checkbox"/> |
| Motion Detect Sensibility | 5 |
| Alarm Input Armed | <input type="checkbox"/> |
| IO Linkage on Alarm | <input type="checkbox"/> |
| Send Mail on Alarm | <input checked="" type="checkbox"/> |
| Upload Image on Alarm | <input type="checkbox"/> |
| Scheduler | <input type="checkbox"/> |
| <input type="button" value="Submit"/> <input type="button" value="Refresh"/> | |

[Device Info](#)
[Alias Settings](#)
[Date&Time Settings](#)
[Users Settings](#)
[Multi-Device Settings](#)
[Basic Network Settings](#)
[Wireless Lan Settings](#)
[ADSL Settings](#)
[UPnP Settings](#)
[DDNS Service Settings](#)
[Mail Service Settings](#)
[Ftp Service Settings](#)
[MSN Settings](#)
[Alarm Service Settings](#)
[PTZ Settings](#)
[Decoder Settings](#)
[Upgrade Device Firmware](#)
[Backup & Restore Settings](#)
[Restore Factory Settings](#)
[Reboot Device](#)
[Log](#)
[GotoCamera](#)
[Back](#)

Figure3.34

3.5.8. PTZ Settings

This sector is for adjusting the speed of PT, pan left&right,tilt up&down.

PTZ Settings

Disable Preset

☐

Go center on boot

center

▼

PT speed

5

▼

Upward patrol speed

5

▼

Downward patrol speed

5

▼

Leftward patrol speed

5

▼

Rightward patrol speed

5

▼

Submit

Refresh

Device Info

Alias Settings

Date&Time Settings

Users Settings

Multi-Device Settings

Basic Network Settings

Wireless Lan Settings

ADSL Settings

UPnP Settings

DDNS Service Settings

Mail Service Settings

Ftp Service Settings

MSN Settings

Alarm Service Settings

PTZ Settings

Decoder Settings

Upgrade Device Firmware

Backup & Restore Settings

Restore Factory Settings

Reboot Device

Log

GotoCamera

Back

3.5.9Reset&Firmware upgrading

This sector is for camera firmware upgrading, it includes device system firmware Upgrade Device Firmware and device application firmware Upgrade Device Embedded Web UI . Be cautious to apply for it, it is risky to upgrade your camera.

Upgrade Device Firmware

Upgrade Device Firmware

Browse...

Submit

Upgrade Device Embedded Web UI

Browse...

Submit

Figure 3.35

3.5.10 Restore Factory Settings

When users forget password, we can restore ex-factory settings, when click, a picture will pop up, Click ok, and wait for 1 minute and you can use it normally. User setting feature restores

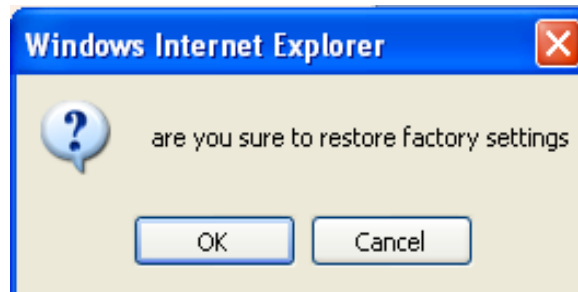


Figure 3.36

3.5.11 Reboot Equipment

Click restart, it appears the above picture, click ok, wait for 1 minute and you can use it normally.

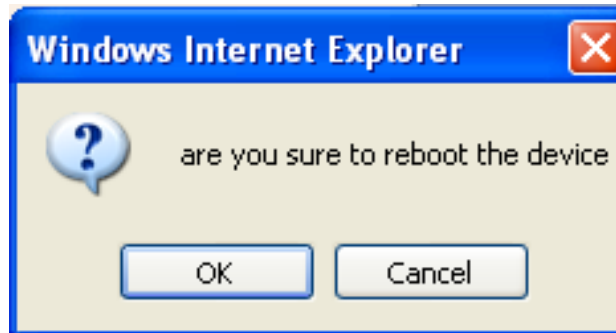


Figure 3.37

3.5.12 Go to Camera

Camera grabs your equipment MAC number to website processing automatically, equipment's MAC number is unique. This function can not need to set up the DDNS and UPNP, that is, they have no relationship, but, as premise, your camera can be visited from internet. That means the camera IP must be set to the outer network IP address. Equipment default ip 192.168.1.99 can not be connected with gotocamera.

| Device Status | |
|--------------------------------|---|
| Device ID | 00D6FB014AA9 |
| Device Firmware Version | 47.37.2.48 |
| Device Embedded Web UI Version | 0.10.4.20 |
| Alias | IPCAM |
| Alarm Status | None |
| DDNS Status | 88safe Succeed |
| UPnP Status | UPnP Failed: Rejected by UPnP Device, Maybe Port Conflict |
| P2P Status | No Action |
| MSN Status | No Action |
| Refresh | |


Attention: The device firmware version is over 47.37.2.48, the device embedded web UI version is over 0.10.4.20, then the camera got the GotoCamera function, Click GotoCamera button.

| |
|---------------------------|
| Device Info |
| Alias Settings |
| Date&Time Settings |
| Users Settings |
| Multi-Device Settings |
| Basic Network Settings |
| Wireless Lan Settings |
| ADSL Settings |
| UPnP Settings |
| DDNS Service Settings |
| Mail Service Settings |
| Ftp Service Settings |
| MSN Settings |
| Alarm Service Settings |
| PTZ Settings |
| Decoder Settings |
| Upgrade Device Firmware |
| Backup & Restore Settings |
| Restore Factory Settings |
| Reboot Device |
| Log |
| GotoCamera |
| Back |

| GotoCamera | |
|--|---|
| Don't have a GotoCamera account? Click Sign Up 1. Start Remote Configuration | |
| Email * | 1634049161@qq.com |
| Password * | ***** |
| Camera Name * | mrkang |
| Camera Description | mrkang123 |
| <input checked="" type="checkbox"/> Send Motion Alerts to GotoCamera | |
| Save Clear | |
| Version | 10100(build212) |
| Device Identifier | 00D6FB014AA9 |
| Status | 4/Online (client2.gotocamera.com:443) |
| Restart Service | * restart GotoCamera service |
| Reset setting | * reset to factory default settings, all you existing settings will be lost |

| |
|---------------------------|
| Device Info |
| Alias Settings |
| Date&Time Settings |
| Users Settings |
| Multi-Device Settings |
| Basic Network Settings |
| Wireless Lan Settings |
| ADSL Settings |
| UPnP Settings |
| DDNS Service Settings |
| Mail Service Settings |
| Ftp Service Settings |
| MSN Settings |
| Alarm Service Settings |
| PTZ Settings |
| Decoder Settings |
| Upgrade Device Firmware |
| Backup & Restore Settings |
| Restore Factory Settings |
| Reboot Device |
| Log |
| GotoCamera |
| Back |

Register: according to prompts, step by step to fill in writing. After the account number is registered, you will receive a verification email sent to your mail box. Finishing the test and verify, then you got a Gotocamera account.


选择语言

[Cameras](#)
[Recordings](#)
[Account](#)
[Share](#)
[Auto Record](#)
[Download](#)
[Buy](#)
[Help](#)

Welcome, You have [1 message](#) [Logout](#)

Your email address will be your GotoCamera User ID.

Please ensure you have typed your email address correctly. If you forget your password, this is where we will send it. Motion detection alerts may also be sent to your email address. We would like to let you know that we will never spam you or sell or otherwise provide your email address to any third party.

*Email

*Password

*Country

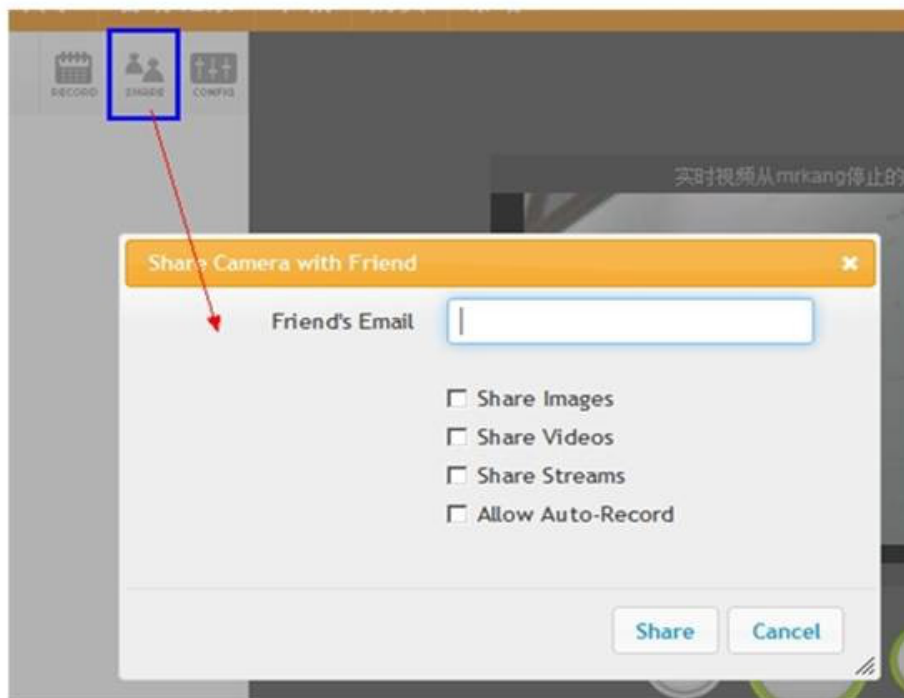
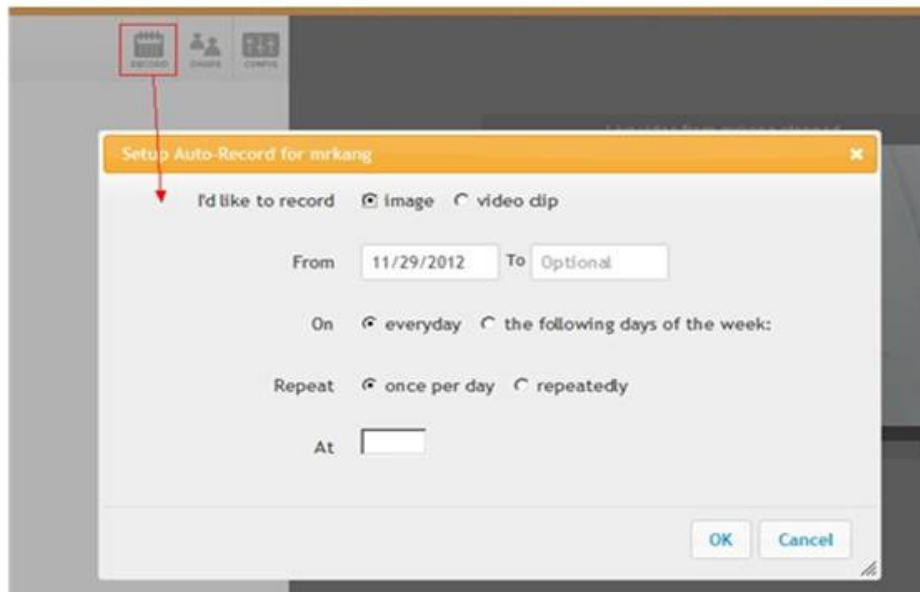
*Timezone

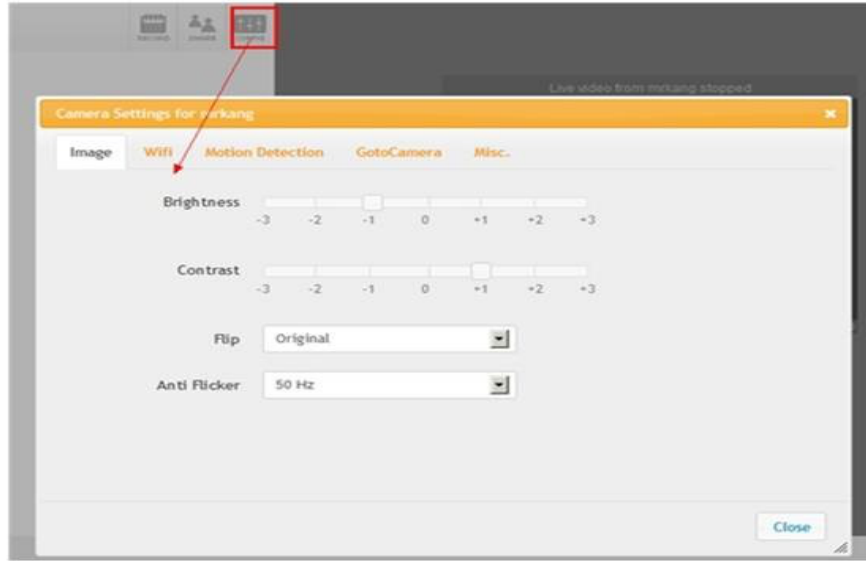
The timezone you select influences your Recording settings as well as other GotoCamera functions. Please select carefully.

Mobile number

Please do not enter parentheses () or hyphens - or any other prefix including your country code (the country code is automatically selected for you). For example, if your mobile number is +1-(555)-888-9999, please enter it as 5558889999.







| | |
|--|--|
| | |
| | |
| | |
| | |
| | |

4 Warranty

Under normal use condition, products resulting from its own failures in the warranty period will be free maintenance. Warranty Terms as following:

a) Charge-free maintenance of the product is one year. We can repair it for free during the guarantee period (Damages not caused by misuse or vandalism).

Repair over guarantee period, we will charge maintenance fee.

b) During guarantee period, breakdown caused by misuse or other reasons out of

range of warranty. You could ask repair depend on the card. We only charge for changed components, the maintenance charge is free.

c) When the products need maintenance, hand up the card with products to the manufacture or local distributor.

d) Take apart item crust, tear up the sealing label privately, this is out of warranty range.

e) We do not accept the damaged item due to modification or add other functions.

The Following Circumstances will not be free warranty

a) Period check, maintenance or change components due to normal attrition.

b) The damages due to crash, extrusion, artificial flooding, moisture or other personal reasons.

c) The damages due to floods, fire, lightning strike and other natural calamities or force majeure incidents factors

d) Repaired item by non-authorized repair centers.

All above terms, if changed, regarded to relevant regulations.

THAT'S ALL, THANK YOU!